



SV ENGINEERINGS
PRIVATE LIMITED

SV ENGINEERINGS PVT LTD

ENGINEERING TRUST...FABRICATING SUCCESS...



Shri A SRINIVASAN
FOUNDER SV ENGINEERINGS PVT LTD & GROUP OF COMPANIES

ABOUT US



Incubated as a proprietorship firm in 1999 by our Founder Mr A. Srinivasan ,the company has now transformed into a Pvt Ltd organization with 5 fully functional Plants under the Stewardship of Mr Sathish Kumar Srinivasan with a capacity to manufacture 3500 tons of Finished Goods Per Month.



Growing in the domain of Medium & Heavy fabrication for more than 25 years with IMS 9001:14001:45001 certification ,SV Engineerings has marked its place among the players in the market.



The Head Quarters of the company is Integrated with Unit 1 @ Kattur Women's SIDCO Industrial Park Chennai-TN, (INDIA)

SEGMENTS READY TO BE CATERED...

We are in progress to manufacture heavy structures and components for the following industries.

- MINING EQUIPMENT OEMS
- CONSTRUCTION EQUIPMENT OEMS
- OIL AND GAS INDUSTRIES
- RAILWAYS
- CEMENT FACTORIES
- ENERGY SECTOR



VISION & MISSION



VISION : To be a global leader in Precision Engineering and Heavy Fabrication, leveraging cutting Edge technology and sustainable practices to deliver High Quality Products On time.



MISSION: To Conduct business in a healthy working environment with the highest Ethics & Integrity by adhering to International Safety regulations while striving hard to exceed customer Expectations by building long term relationships & driving Industrial excellence with reliability and efficiency.

MILESTONE COMPLETED



OUR ESTEEMED CLIENTELE



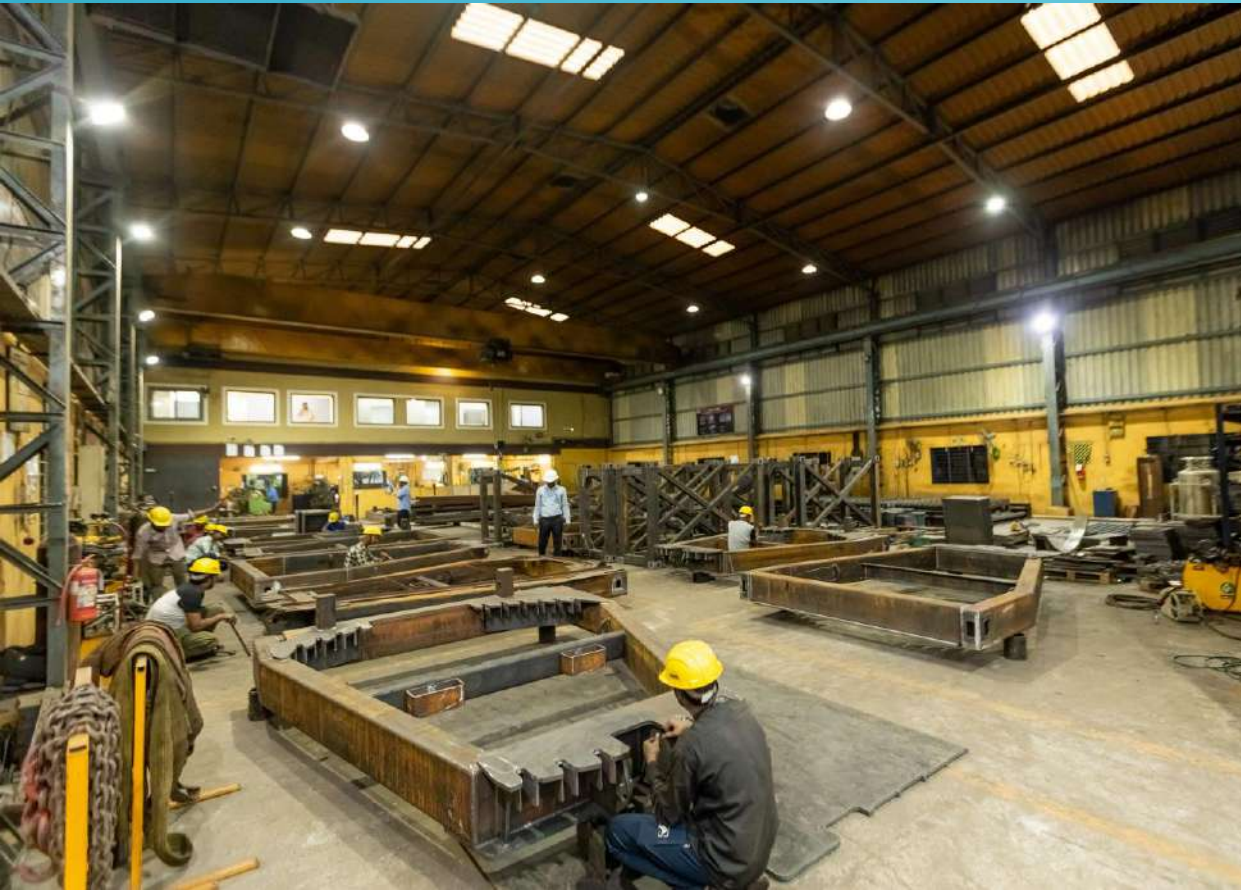
QHSE POLICY

- **MANAGEMENT, EMPLOYEES AND SUBCONTRACTORS AT ALL LEVELS ARE COMMITTED TO QUALITY, CUSTOMER SATISFACTION, SAFETY, PROTECTION OF THE ENVIRONMENT AND TO CONTINUOUSLY IMPROVED OPERATIONS AND SYSTEMS IN ALL WE DO. TO THIS END, WE IMPLEMENT A QHSE MANAGEMENT SYSTEM ACCORDING TO ISO 9001:2015, ISO 14001:2015 AND ISO 45001:2018. THE MANAGEMENT REVIEWS THE SYSTEM ON A REGULAR BASIS.**
- **WE WILL COMPLY WITH ALL LEGAL REQUIREMENTS APPLICABLE TO OUR OPERATIONS. WE WILL FOLLOW RULES AND REQUIREMENTS FROM OUR CLIENTS.**
- **WE USE CLEARLY DEFINED OBJECTIVES AND TARGETS TO FIX OUR QHSE POSITION AND PLOT THE COURSE AHEAD. WE ARE TRULY COMMITTED TO ZERO DEFECTS, ACCIDENTS AND SPILLS, AND TO THE PREVENTION OF POLLUTION.**
- **WE EDUCATE OUR STAFF IN ACCORDANCE WITH OUR TRAINING POLICY, CONTINUOUSLY IMPROVING STAFF KNOWLEDGE AND AWARENESS ABOUT THE IMPORTANCE OF QUALITY, SAFETY AND RESPECTING THE ENVIRONMENT IN THEIR DAILY WORK.**



UNIT 1 SIDCO KATTUR FACILITY

The Head Quarters sits on Unit one which is a 15000 Sq. ft Covered Plant that houses Cutting & Welding process.



UNIT 1—A MACHINE SHOP FACILITY



This Facility has multiple CNCs ,VMCs along with turning Lathes ,Drilling and cutting machines.

UNIT 1 MACHINE SHOP CAPACITY

S.NO	MACHINE TYPE	MAKE ,MODEL & SPEC		NO OF UNITS
1	TURRET MILLING	RAMAN	X-1250, Y-500, Z-650	1
2	TURRET MILLING	RAMAN	X-1800, Y-500, Z-650	1
3	PILLAR TYPE DRILLING	PREMIER & PARMAR	1.25 Inches	3
4	BAND SAW CUTTING	LAXSON	300 mm	1
5	BENCH GRINDING	KEC	6 Inches	1
6	CUT OFF MACHINE	BOSCH	400	1
7	CNC PROFILE CUTTING	HYPOTHERM	2-110mm	1
8	LATHE MACHINE	CAUVERY	150 mm	1
9	LATHE MACHINE	MASTER	250 mm	1
10	TAPPING ATTACHMENT	TACO	20 mm	1
11	RADIAL DRILLING			1
12	COMPRESSORS	CHICAGO PNEUMATICS	CPM 5D ,CPM 7D,CPA10D	3
13	M1TR	PAOFONG	PF-4S	1
14	CIRCULAR SAW MACHINE	FANC 100	100 mm Cutting Thickness	1

UNIT 1-A MACHINE SHOP CAPACITY

S.NO	MACHINE TYPE	MAKE ,MODEL & SPEC		NO OF UNITS
1	CNC TURNING	JYOTI DX2005A	X-200, Z-500	1
2	CNC TURNING	PINACHO SINUMERIK 828D	X-200, Z-500	1
3	CNC TURNING	LMW LX20TL5	X-185, Z-560	1
4	LASER MARKING MACHINE			1
5	VMC	HARTFORD OMNIS 1270	X-1270,Y-635, Z-515	1
6	VMC	VICTOR TAICHUNG VCENTER A130	X-1300,Y-780,Z-700	1

UNIT 1-WELDING ,EOT CRANES & GENSET

S.NO	MACHINE TYPE	MAKE MODEL & SPECIFICATION	NO OF UNITS
1	E.O.T CRANE	10 TON	1
2	E.O.T CRANE	2 TON	1
3	GENERATOR	CUMMINS CP160 D5P 160 KVA	1
4	WELDING MACHINE	PANASONIC 440V~500A , 440V~400A	31

CNC FLAME & PLASMA CUTTING MACHINE OF UNIT 1



SPECIFICATIONS

MAKE:
INVENT WELD AUTOMATION

MODEL:
CVC2.5M4M

BED DIMENSIONS:
2500 mm X 4000mm



FABRICATING EXCELLENCE



WELDING VALUES



UNIT 1-A MACHINE SHOP CNC CAPACITY



X Z X-200, Z-500
Chuck Dia: 200mm
Max Turning Dia: 350mm
Max turning length: 500mm



X Z X-200, Z-500
Chuck Dia: 200mm
Max Turning Dia: 350mm
Max turning length: 500mm



X Z X-185, Z-560
Chuck Dia: 210mm
Max Turning Dia: 320mm
Max turning length: 500mm

UNIT 1 -A MACHINE SHOP VMC CAPACITY



TABLE WORK AREA : 1400 X 700 mm
X Y Z : X-1300 Y-780 Z-700 mm



TABLE WORK TABLE : 1500 x 600 mm
X Y Z : X-1270 Y-650 Z-550 mm

UNIT 1 –A MACHINE SHOP FACILITY

CIRCULAR SAW CUTTING MACHINE

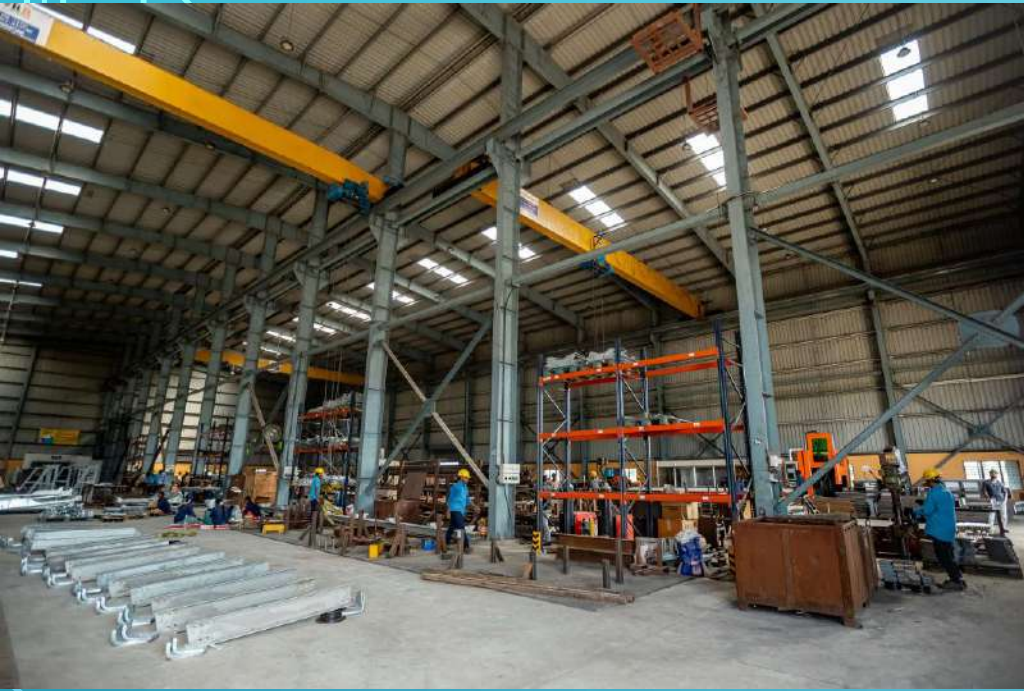


UNIT 2 – SHOLAVARAM FACILITY



The FLAGSHIP Unit of SVEPL that is spread across 60000 sq. ft which houses Tube Laser cutting & Fiber Laser Cutting machine along with 4 EOT Cranes. This facility produces more than 2000 varieties of components.

UNIT 2 INFRASTRUCTURE



UNIT 2 -INFRASTRUCTURE

S.NO	MACHINE TYPE	MAKE ,MODEL & SPEC	NO OF UNITS
1	CNC FIBER LASER MACHINE (IMPORTED)	DNE 6KVV 2500 X 6500 mm	1
2	TUBE LASER (IMPORTED)	GLORYSTAR 4KVV	1
3	LATHE MACHINE		1
4	UNIVERSAL MILLING	SUNRISE X-750,Y-300, Z-500	1
5	MAGNETIC DRILLING MACHINE	BDS	1
6	RADIAL DRILLING MACHINE		1
7	DRILLING MACHINE	PREMIER	2
8	PRESS BREAK MACHINE(IMPORTED)	DURMA 4M 320 TON	1
9	PRESS BREAK MACHINE(IMPORTED)	DURMA 4M 170 TON	1
10	BAND SAW CUTTING	KRISHNA 205 mm	1
11	AIR COMPRESSOR	KAESER 10 BAR	2
12	AIR COMPRESSOR	KAESER 6.5 BAR	1

UNIT 2-WELDING ,EOT CRANES & GENSET

S.NO	MACHINE TYPE	MAKE ,MODEL & SPEC		NO OF UNITS
1	FORK LIFT	GODREJ	4 TON	1
2	EOT CRANE	RRE	10 TON	2
3	EOT CRANE	RRE	7.5 TON	2
4	HYDRAULIC PRESS	EURO ONE	100 TON	1
5	GENERATOR	POWERICA	160 KVA	1
6	WELDING MACHINES	PANASONIC		10

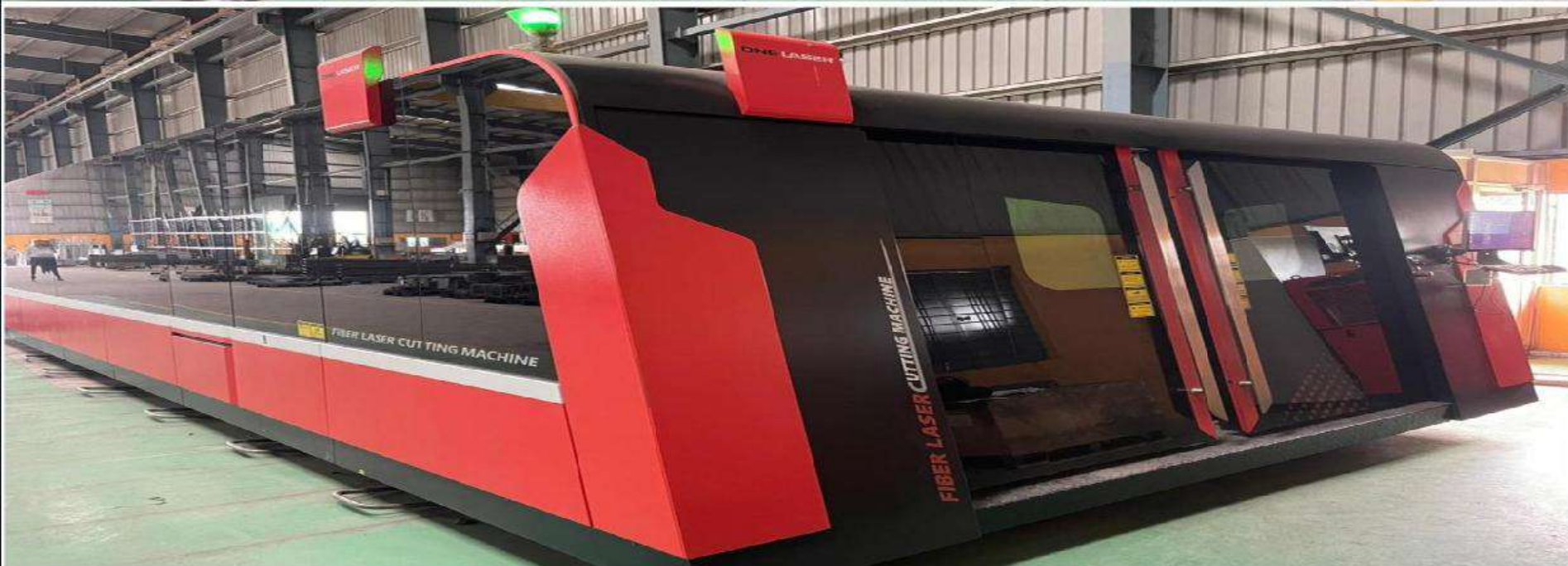
TUBE LASER CUTTING AT UNIT 2



Max Diagonal : 550 mm
Max Length : 12000 mm
Multiple Profiles like (RECTANGLE ,SQUARE ,H-SECTION ,I-BEAM , T JOINT) Can be cut.

CARBON STEEL	16 mm
SS	12 mm
ALUMINIUM	8 mm

FIBER LASER CUTTING MACHINE AT UNIT 2



BED : 6500 mm X 2500 mm
Carbon steel : 30 mm
SS : 16 mm
Brass : 8 mm
Aluminium : 12 mm
Source 6KW

FOLDING MACHINES OF 320 TON & 175 TON CAPACITY @ UNIT 2

FOLDING METALS ...BEHOLDING BUSINESS ETHICS...



UNIT 3 – VELLANUR FACILITY

GRIT BLASTING & PAINTING BOOTH



This Unit Houses 2 dedicated painting booths with enclosure for better painting quality along with a separate Grit blasting facility and a Metalizing Facility which are individually enclosed.

EXTERNAL DUST COLLECTING UNIT OF GRIT BLASTING @ UNIT 3



UNIT 3 – VELLANUR FACILITY

S.NO	MACHINE TYPE	MAKE ,MODEL & SPEC	NO OF UNITS
1	GRIT BLASTING	CUSTOM BUILT BY SVEPL	1
2	AIR COMPRESSOR	ATLAS COPCO 10 BAR	1
3	AIR COMPRESSOR	ATLAS COPCO 9.75 BAR	1
4	METALIZING		1
5	EOT CRANE	RRE 7.5 TON	1
6	EOT CRANE	RRE 10 TON	1
7	GENERATOR	KIRLOSKAR 82.56KV	1

UNIT 4 – VELLANUR FACILITY



This Facility houses a MESSER Plasma Cutting machine and a Robotic Welding machine.

UNIT 4 – MACHINE CAPACITY

S.NO	MACHINE TYPE	MAKE ,MODEL & SPEC		NO OF UNITS
1	ROBOTIC WELDING MACHINE	PANASONIC TM-2000G4	6-AXIS R	1
2	PLASMA CUTTING MACHINE	MESSER PROFITHERM	14000 x 2500 mm	1
3	EOT CRANE	RRE	20 TON ,10 TON	2
4	EOT CRANE	RRE	20 TON ,10 TON	2
5	PRESS BREAK MACHINE	KISHAN	2.5 M 30 TON	1
6	AUTOMATIC WELDING MACHINE	CUSTOM MADE BY SVEPL		1
7	GENERATOR	CUMMINS POWERICA	260 KVA	1
8	WELDING MACHINES	PANASONIC		9

CNC PLASMA CUTTING MACHINE AT UNIT 4



MAKE : MESSER PROFITHERM
BED DIMENSIONS : 14000 mm X 2500 mm
FLAME CUTTING THICKNESS : 250 mm
PLASMA CUTTING THICKNESS : 30 mm

PANASONIC ROBOTIC WELDING MACHINE TM2000-G4 AT UNIT 4



Model		TM-1800	TM-2000
Type		Long arm	Long arm
Structure		6 axis articulated	
Payload		6 kg	
Maximum Reach		1 809 mm	2 011 mm
Minimum Reach		430 mm	550 mm
Working Range		1 379 mm	1 461 mm
Max. Motion Speed	RT (Rotating trunk)	195°/s	
	UA (Upper arm)	197°/s	
	FA (Forearm)	205°/s	
	RW (Rotating wrist)	425°/s	
	BW (Bending wrist)	425°/s	
	TW (Twisting wrist)	629°/s	
Position Repeatability			±0.10 mm
Motors	Total Power	4 700 W	
	Brakes	All axes	
Mounting		Floor / Ceiling*	
Weight		215 kg	217 kg

UNIT 5 VELLANUR FACILITY



UNIT 5 –MACHINE SHOP CAPACITY

HAITION DOUBLE COLUMN VMC TO MACHINE MASSIVE COMPONENTS



Items			Main Parameter
Machining Capacity	X travel	mm	11000
	Y travel	mm	5400
	Z travel	mm	2000
	Distance Between columns	mm	5100
	Spindle nose to table surface	mm	150-1400
Table	Table Size	mm	4000 x 10000
	Table loading	t/m	20
	T slot size	mm	28x250
Feed	Cutting feedrate (X/Y/Z)	m/min	6/6/6
	Rapid traverse (X/Y/Z)	m/min	10/15/10
Spindle	Max spindle speed	rpm	3500
	Spindle power	kW	35/37
	Spindle torque	N.m	1850/2300
	Ram section	mm	450x450
Other	Power capacity	kVA	85
	Machine weight	t/m	112
	Machine size (LXWXH)	mm	20000X11000X7300

CNC VTL WITH TURN MILL



	Items		Main Parameter
Processing Range	Max Cutting Dia	mm	φ4000
	Max Swing Diameter	mm	φ4000
	Max Workpiece Height	mm	2500
	Max Workpiece Weight	kg	40000
Travel	X travel	mm	-2~2175
	Z travel	mm	1400
Worktable	Max Worktable Dia	mm	φ3600
	Worktable speed	r/min	0.02~63
	max C axis speed	r/min	2
	Series of speed	2 steps	ZF dual speed gear box
Speed	Main motor power	kW	37*2
	X/Z axis rapid travel speed	m/min	6/6
	Feed speed	mm/min	1~1000
	Spindle speed	r/min	1~2400
Spindle	Spindle motor power	kW	22
	Tool shank	-	BT50
	Pull-stud	-	P50T-II(MAS403)
	Ram section	mm	250x250
Others	CNC control system	Fanuc	Siemens
	Power capacity	kVA	140
	Dimension (LXWXH)	mm	12000/9500/7000
	Machine Weight	Kg	73000

HORIZONTAL BORING MACHINE @ UNIT 5



OUR PRODUCTS

SINCE OUR PRODUCTS ARE TAILORMADE AS PER CUSTOMER'S REQUIREMENT OUR PRODUCT RANGE EXTENDS BEYOND HORIZON...HERE ARE A FEW MASSIVE STRUCTURES THAT ROLLS OUT OF OUR FACTORY ON A DAILY BASIS

WIND TURBINE HUB TRANSPORTATION TOOL

WIND TURBINE BLADE TRANSPORTATION TOOL

WIND TURBINE NACELLE TRANSPORTATION TOOL

GUIDER SUPPORT

SHEET METAL COMPONENTS OF ELEVATORS

FOUNDATION STUD PLATE OF WIND TURBINE

NOSE CONE

WIND TURBINE GENERATOR MAIN FRAME

STACKING FRAME FOR VESSEL LOADING OF BLADES

CHILD PARTS OF THE ABOVE PRODUCTS

MACHINED PARTS OF VARIOUS HEAVY STRUCTURES

SAMPLES OF FINISHED GOODS

BLADE TRANSPORT TOOL



FABRICATED PART



SAMPLES OF FINISHED GOODS

NACELLE TRANSPORT TOOL



BLADE TRANSPORT TOOL



HUB TRANSPORTATION TOOL



NACELLE TRANSPORTATION TOOL



GUIDER SUPPORT

Galvanized Products



WHY CHOOSE US

At SVEPL We always put Customers First.

QUALITY

With a Dedicated Team of 15 QA-QC Engineers there is never a miss when a product passes through any Process.

ON TIME DELIVERY

Our Process times are meticulously calculated keeping in mind the Lead time, Buffer time and fluctuations which helps us On Time Delivery of Finished Goods

COMPETITIVE COSTS

You may find our Pricing & Costing is always on an optimum side and Competitive in the market.

OUR MAN POWER

- With 150 + Permanent employees who include Production, Quality , Purchase & Planning Engineers along with Machine Operators, Certified welders and Helpers we assure you a Product range ensured with Quality and on time delivery.



OUR LOGISTICS FLEET



ACE CRANE 12 TON CAPACITY



24 FEET Heavy Vehicle for Material Movement



10 FEET Light Vehicle for Material Movement



COUNTRIES OF EXPORT

GERMANY

SPAIN

BRAZIL

MOROCCO



NORD CERTIFICATION

TUVINDIA

Certificate

Management system as per
ISO 9001:2015

The Certification Body TUV INDIA PVT. LTD. hereby confirms as a result of the audit, assessment and certification decision according to ISO/IEC 17021-1:2015, that the organization

SV ENGINEERINGS PRIVATE LIMITED
Plot No. 247 - SIDCO Women Industrial Park,
Kattur, Thirumullaivoyal,
Chennai - 600 062,
Tamil Nadu,
India

operates a management system in accordance with the requirements of ISO 9001:2015 and will be assessed for conformity within the 3 year term of validity of the certificate.

Scope

Manufacture Supply of Machined and Fabricated Metal Components & Machining and Supply of Plastic Components.

Certificate Registration No. **IND 100 23394064**
Audit Report No. **Q 12432/2023**

Valid from **30.05.2023**
Valid until **29.05.2026**
Initial certification **30.05.2023**



Visit our database to
verify the validity of
this certificate.

Mumbai, **23.09.2024**

Certification Body at TUV INDIA PVT. LTD.

TUV INDIA PVT. LTD.
801, Raheja Plaza 1, L.B.S Marg,
Ghatkopar (W) Mumbai - 400 086,
India
www.tuv-nord.com/in

TUV®



TUVNORDGROUP

TUVINDIA

Certificate

Management system as per
ISO 14001:2015

The Certification Body TUV INDIA PVT. LTD. hereby confirms as a result of the audit, assessment and certification decision according to ISO/IEC 17021-1:2015, that the organization

SV ENGINEERINGS PRIVATE LIMITED
Plot No. 247 - SIDCO Women Industrial Park,
Kattur, Thirumullaivoyal,
Chennai - 600 062,
Tamil Nadu,
India

operates a management system in accordance with the requirements of ISO 14001:2015 and will be assessed for conformity within the 3 year term of validity of the certificate.

Scope

Manufacture, Supply of Machined and Fabricated Metal Components & Machining and Supply of Plastic Components.

Certificate Registration No. **IND 104 23394064**
Audit Report No. **Q 12432/2023**

Valid from **30.05.2023**
Valid until **29.05.2026**
Initial certification **30.05.2023**



Visit our database to
verify the validity of
this certificate.

Mumbai, **23.09.2024**

Certification Body at TUV INDIA PVT. LTD.

TUV INDIA PVT. LTD.
801, Raheja Plaza 1, L.B.S Marg,
Ghatkopar (W) Mumbai - 400 086,
India
www.tuv-nord.com/in

TUV®



TUVNORDGROUP

TUVINDIA

Certificate

Management system as per
ISO 45001:2018

The Certification Body TUV INDIA PVT. LTD. hereby confirms as a result of the audit, assessment and certification decision according to ISO/IEC 17021-1:2015, that the organization

SV ENGINEERINGS PRIVATE LIMITED
Plot No. 247 - SIDCO Women Industrial Park,
Kattur, Thirumullaivoyal,
Chennai - 600 062,
Tamil Nadu,
India

operates a management system in accordance with the requirements of ISO 45001:2018 and will be assessed for conformity within the 3 year term of validity of the certificate.

Scope

Manufacture, Supply of Machined and Fabricated Metal Components & Machining and Supply of Plastic Components.

Certificate Registration No. **IND 126 23394064**
Audit Report No. **Q 12432/2023**

Valid from **30.05.2023**
Valid until **29.05.2026**
Initial certification **30.05.2023**



Visit our database to
verify the validity of
this certificate.

Mumbai, 23.09.2024

Certification Body at TUV INDIA PVT. LTD.

TUV INDIA PVT. LTD.
B01, Raheja Plaza 1, L.B.S Marg,
Ghatkopar (W) Mumbai - 400 036,
India
www.tuv-nord.com/in

TUV®



TUVNORDGROUP



243504



CERTIFICATE

of conformity of the factory production control
No. **2435-CPR-910873**

In compliance with Regulation (EU) No. 305/2011/EC of the European Parliament and of the Council of 9 March 2011 (the Construction Products Regulation or CPR) this certificate applies to the construction product:

Manufacture and Supply of Fabricated Structural Steel Components executed according to EN 1090-2:2018

Execution class: **EXC 3**, classified according to EN 1090-2:2018

CE marking method: **method 3a**

Area and extent of use: **N/A**

Welding processes: **written down in the final report No. 910873**

Groups of basic materials: **written down in the final report No. 910873**

Authorized employees of supervision: **written down in the final report No. 910873**

produced by or for

SV ENGINEERINGS.

D.P.No.247, SIDCO Women's Industrial Park, Kattur, Thirumullaivoyal
Chennai 600062, India

and produced in the manufacturing plant(s)

SV ENGINEERINGS.

D.P.No.247, SIDCO Women's Industrial Park, Kattur, Thirumullaivoyal
Chennai 600062, India

This certificate attests that all provisions concerning the assessment and verification of consistency of performance described in Annex ZA of the standard
written down in the final report No. 910873

under the system 3a for the performances set out in the certificate are applied and that

the factory production control fulfills all the prescribed requirements set out above

This certificate was first issued on **18 February 2021** and will remain valid as long as neither the harmonised standard, the construction product, the AUCP methods nor the manufacturing conditions in the plant are modified significantly, unless suspended or withdrawn by the factory production control certification body. The validity of the certificate is subject to regular surveillance audits conforming compliance with the FPC requirements.

Prague, 18 February 2021

Signature



V 3190



validity code: **7EFC774B-815**

Check the validity of this certificate using this code at www.ll-c.info



www.ll-c.net

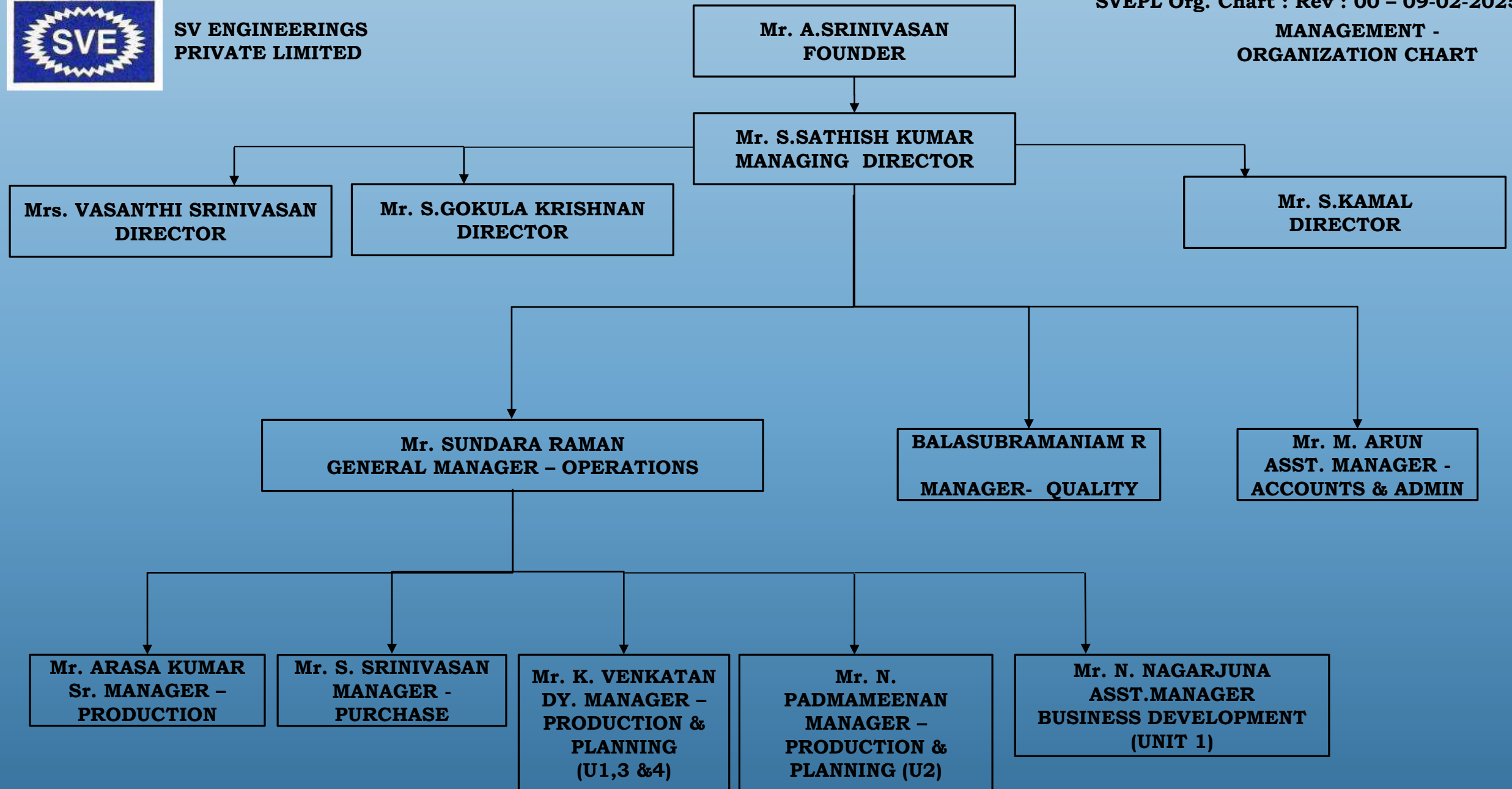
LL-C (Certification) Czech Republic a.s. | Pobežná 620/3, 186 00 Praha 8



**SV ENGINEERINGS
PRIVATE LIMITED**

SVEPL Org. Chart : Rev : 00 – 09-02-2025

**MANAGEMENT -
ORGANIZATION CHART**

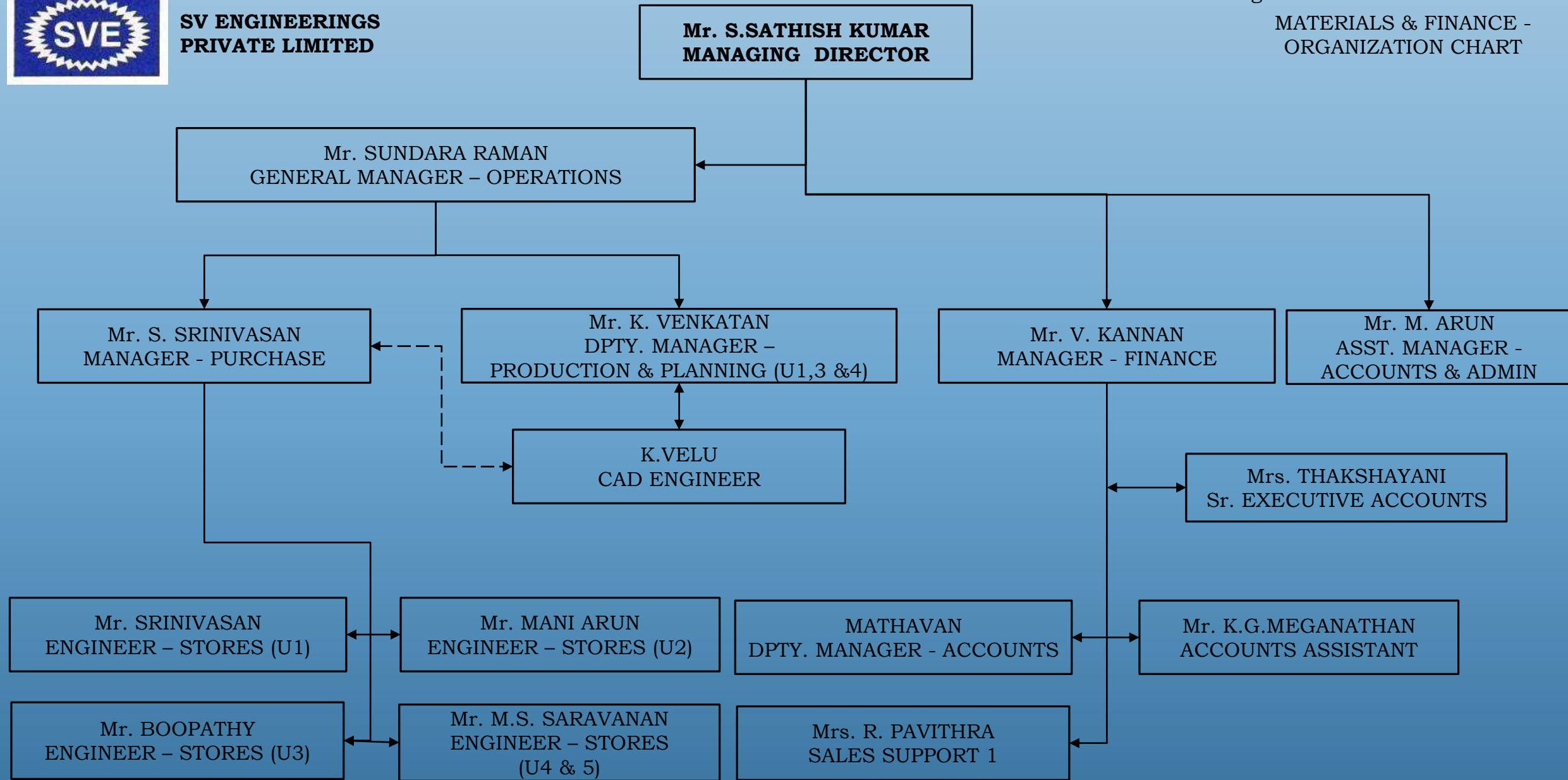




**SV ENGINEERINGS
PRIVATE LIMITED**

SVEPL Org. Chart : Rev : 00 – 09-02-2025

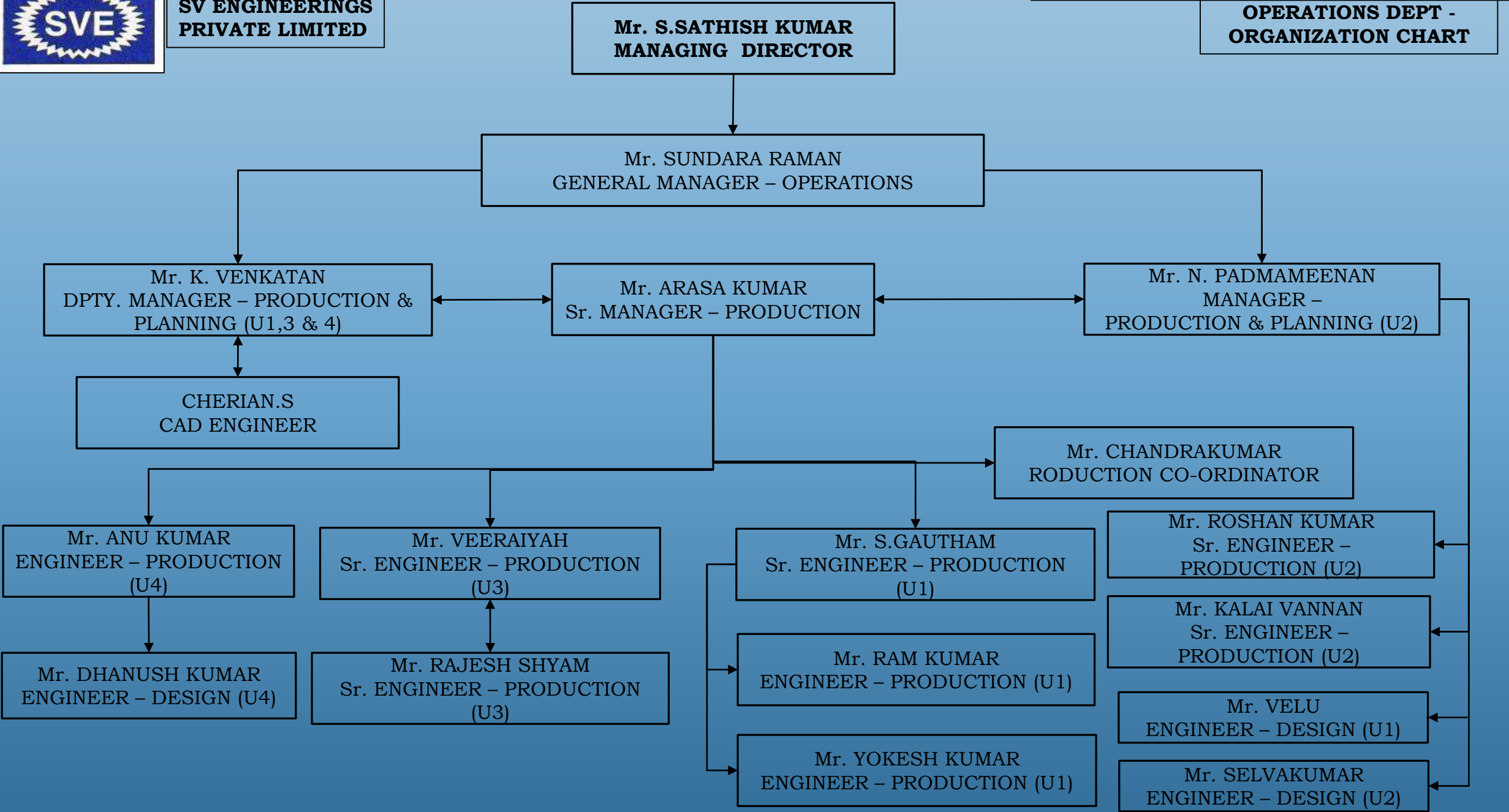
**MATERIALS & FINANCE -
ORGANIZATION CHART**





**SV ENGINEERINGS
PRIVATE LIMITED**

**OPERATIONS DEPT -
ORGANIZATION CHART**





**SV ENGINEERINGS
PRIVATE LIMITED**

**QUALITY DEPT -
ORGANIZATION CHART**

**Mr. S.SATHISH KUMAR
MANAGING DIRECTOR**

**Mr. ARASA KUMAR
Sr. MANAGER - PRODUCTION**

**Mr. BALASUBRAMANIAM R
MANAGER- QUALITY**

**Mr. N. PADMAMEENAN
MANAGER (U2)**

**Mr. J.ALLAN LEANDER
ASST. MANAGER –
IMS & QUALITY (U1,3 & 4)**

CMM- QUALITY

**M VIGNESH
ASST. MANAGER – QUALITY
(U2)**

**Mr. M.DEVANDRAN
SR.ENGINEER –
QUALITY (U2)**

**Mr. AMALENDU MOHANTHY
Sr. ENGINEER –QUALITY (U1)
FINAL & RECEIVING INSP**

**Mr. VIJAY
ENGINEER - QUALITY (U3)
RECIVING, INPROCESS & FINAL**

**Mr. M. YUVARAJ
ENGINEER – QUALITY (U2)**

**Mr. P.RAJESH PRAKASH
ENGINEER – QUALITY (U2)**

**Mr. NATARAJAN
ENGINEER – QUALITY (U1)
PROCESSH INSP – GENERAL**

**Mr. RAHUL
ENGINEER - QUALITY (U3)
RECEIVING, INPROCESS &
FINAL**

**Mr. G.ARUN
ENGINEER – QUALITY (U2)**

**Mr. R.SATHIYAMOORTHY
ENGINEER – QUALITY (U2)**

**Mr. PRAKASH
ENGINEER – QUALITY (U1)
PROCESSH INSP - SHIFT**

**Mr. ANBARASU
ENGINEER – QUALITY (U4)
RECIVING, INPROCESS & FINAL**

**M.VIGNESH
ENGINEER – QUALITY (U2)**

**R S PRASANNA
ENGINEER – QUALITY (U2)**

**Mr. RAJENDHARAN
ENGINEER – QUALITY (U1)
PROCESSH INSP - SHIFT**

**S RAJKAMAL
NDT L2 – QUALITY (U4)
RECEIVING, INPROCESS &
FINAL**

**Mr. ARIVAZHAGAN
ENGINEER – QUALITY (U1)
PROCESSH INSP - SHIFT**

**RAJIV KRISHNA.R
NDT L2 – QUALITY (U4)
RECEIVING, INPROCESS &
FINAL**

FUTURE PLANS



STRENGTHENING FOUNDATIONS



MARKET EXPANSION & DIGITAL
TRANSFORMATION



DIVERSIFICATION & STRATEGIC
PARTNERSHIPS



TO BECOME EMINENT AMONG THE PEER
GROUP OF OEM SUPPLIERS

OUR BANKING PARTNERS

- HDFC

The background is a solid blue gradient. In the corners, there are white line-art illustrations of circuit boards or neural networks, with lines connecting to small circles.

THANK YOU!

Please contact: info@svepl.co

PH :7338789413